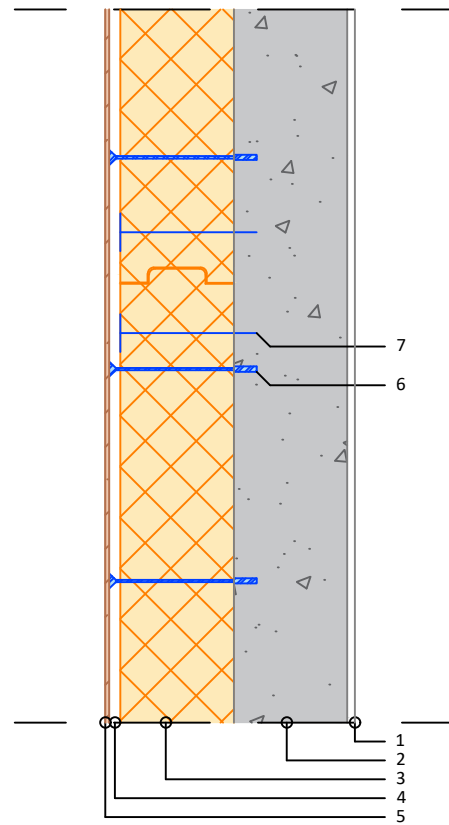
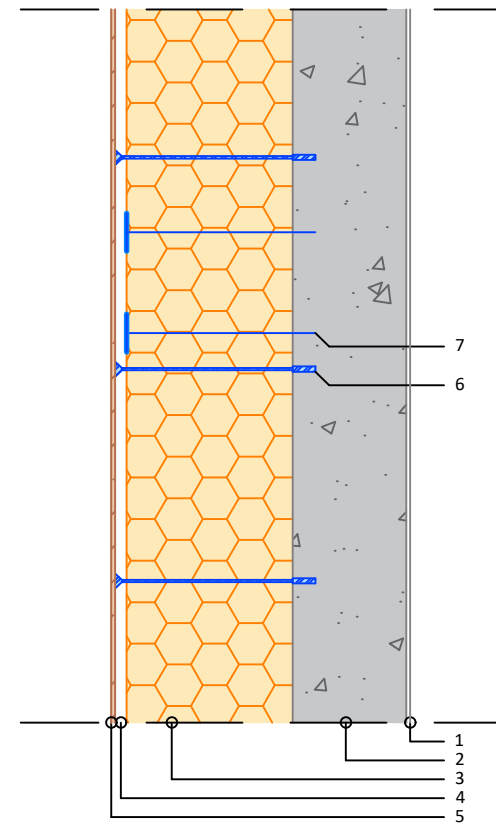


# PIR



150 mm Powerwall Pro  
( $\lambda = 0.026 \text{ W/mK}$ )

# MW



220 mm MW  
( $\lambda = 0.035 \text{ W/mK}$ )

WALL - Ventilated facade (cladding)  
 $U = 0.17 \text{ W/m}^2\text{K}$

FEEL  
GOOD  
INSIDE

