



Installation instructions

General

- Make sure that you have read these instructions properly and fully understood them before starting the installation.
- Instasoft® must always be covered by a plasterboard with a thickness of at least 12.5 mm.
- Please use the required materials, as described in this installation guide.
- Make sure that you use personal protective equipment during installation procedure.

Applications



- Thermal-acoustic insulation can be used in the below applications:
 - internal walls,
 - inner surface of exterior walls (provided that the walls are dry and do not present any humidity issues*. In case of any doubts, a hygrothermal analysis must be carried out).
 - against the party wall between two apartments (in the same building) / houses.
- For use in rooms and dwellings that are properly heated and ventilated with low or average humidity. Examples: bedrooms, study, dining rooms etc.
- Not to be used in damp areas. Furthermore, Instasoft® panels cannot be installed in a room with pre-existing humidity problems (e.g. cellar, etc.), without having previously treated the sources of damp before installing the product to avoid mould growth. Instasoft® product cannot be glued to ceilings or installed on floors.
- In case of installation nearby a heat source (radiator, chimney, pipe...) each case must be studied and adapted preferably with a qualified tradesman. In case of any doubts, please contact our Technical Services team on technicalservices@recticel.com.
- In case of installation on walls more than one storey high, each specific case must be consulted with a qualified tradesman. In case of any doubts, please contact our Technical Services team on technicalservices@recticel.com.

(*)

- walls in such a condition that they easily let rainwater in. In no cases should there be any visible damage, such as moisture problems or cracks on the walls. A preparatory inspection should be carried out prior to installation, even when there is no visible evidence of wall damage,
- walls which are not yet grouted,
- buildings or parts of the buildings, which are subject to strong moisture exposure and penetration, making the wall damp for a prolonged period,
- damp walls due to rising moisture,
- walls showing or having presented a damage caused by frost.



Acoustic insulation panel
Easy to install · Internal walls



Before starting - Advice and security

Storage of the panels

- Instasoft® panels must always be stored in a sheltered (inside) and dry area, and in a horizontal position.
- Do not to keep any objects with flammable contents on or near the Instasoft® panels. It is also forbidden to store Instasoft® panels near a heat source (e.g. radiators, stove, open, fireplaces, chimney pipes, non-compliant electrical installation, etc.).
- Make sure that all possible points of ignition are eliminated and ventilate the premises before, during and after installation.
- It is strictly forbidden to smoke, drink or eat in the application area.

Glue handling

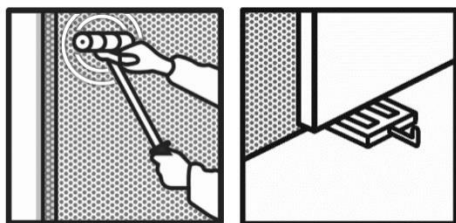
- The glue can only be used in areas where any unprotected flame or/and all heat sources have been removed. The electrical system must be adequately protected and in accordance with current standards. Always use earthed sockets while installing the product.
- When handling the glue, always ensure that you are equipped with the suitable PPE, shoes and anti-static clothing. Make sure that the floors you are working on are not insulator but conductor in order to avoid any static electricity problems in the event of glue transfer.

Required materials

To install Instasoft® panels



Useful tools



- Use the pressure roller to put consistent pressure across the panels. Use packing strips to position the plasterboard.

Recticel Insulation

7 boulevard de la Chanterie – 49124 Saint Barthélemy d'Anjou
recticelinsulation.com

Ref: V3GPO

Date: 30/10/2020

FEEL
GOOD
INSIDE

RECTICEL
insulation



Recticel glue for acoustic Instasoft® panels



- Quantity: we recommend using 0.8 kg/m² of glue in total, which is 0.2 kg/m² on each side.
- Always use Recticel glue for installation by double-sided adhesion of the acoustic Instasoft® panels. Please follow all the instructions (storage, installation, transport) as well as the safety guide. Read carefully the product label.

Plasterboard

- You can use any type of the plasterboard, provided that it has got a minimum thickness of 12.5 mm.
- Refer to the plasterboard manufacturer's literature for installation instructions, storage, cutting, handling, transport etc.

Joint strips for plasterboard, plaster filling and finishing

- To finish the joints between the plaster, you will require :
 - joint tape,
 - filler and finisher,
 - a spatula or other application material.
- Refer to the manufacturer's literature for plasterboard finishing instructions.

Recommended personal protective equipment



- FFP2 protective mask
- Gloves and protective glasses
- Antistatic safety shoes
- Protective clothing with antistatic properties (EN 1149-5)



Preparation for the installation

Wall preparation

- The surface to be covered must be dry and dust-free.
- The quality of the surface must be structurally sound (i.e. no loose pieces, wall panels etc.) without any cracks or defects. Your wall must not have any irregularities more than 3 mm in 1 m. If so, arrange a wall patching to make up for the flatness of the wall. In case of any doubts regarding the quality of the base surface, you should first carry out adhesion testing on site before starting.
- Take into account any relevant electric cabling or possible mounting supports, for example for heating elements. Determine before where any such elements need to be positioned. The panels must always be glued over the entire surface. If necessary, place any cables in the structural wall behind the insulation.
- All elements that need to be mounted (e.g. heating elements) must be attached to a supportive wall sufficiently strong, behind the Instasoft® system.

Preparatory drawing and method

- Your acoustic panels must be stored for at least 48 hours before their installation in the same room that you are going to insulate (not damp), at the room temperature.
- Before installing Instasoft® panels, you should prepare a preparatory drawing for the installation of the panels. This will allow you to adjust the dimensions of the panels if necessary. Therefore, if the panel at the end of a wall or just below the ceiling is less than 10 cm, you can make an adjustment to the first panel accordingly. Do not use Instasoft® panel pieces smaller than 10 cm.
- It is best to start at the bottom of the wall. If you make sure the first panel is positioned correctly, then the rest of the panels will be easier to install. Depending on the evenness of the floor, you may need to adapt the bottom panels.
- To cut Instasoft® panels, we recommend using a snap-off blade knife (cutter blade).
- Instasoft® panels can be installed horizontally or vertically.



Installation with the use of Recticel water-based glue

Precautionary measures

- Make sure to remove any possible sources of ignition and ventilate the rooms during and after installation.
- Important: gluing must always be done in a sufficiently ventilated space.
- Never use a tool which can potentially create sparks.
- Make sure that you use personal protective equipment (gloves, glasses, etc.) during installation procedure.

Installation

The installation is quite a simple process, based on gluing, without any mechanical fixing. For optimal results, always use Recticel glue provided for gluing Instasoft® thermal-acoustic panels in order to install them.

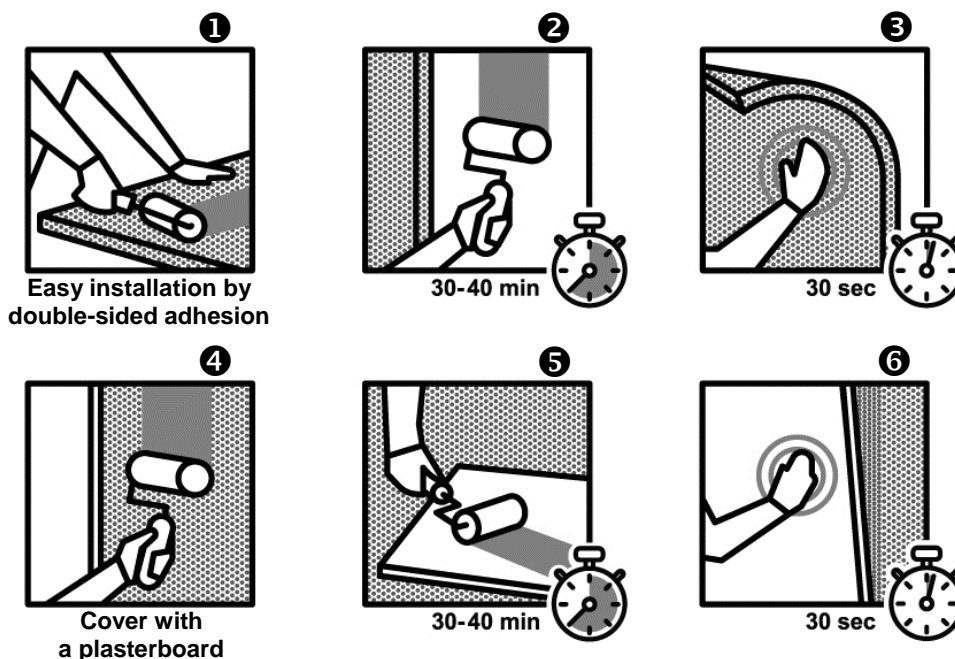
Mix the glue before use to be sure it is consistent throughout. The glue is best applied using a short-haired roller.

We recommend using 0.8 kg/m² of glue, which is 0.2 kg/m² on each side. 4 sides are to be glued : acoustic panel ❶/ wall ❷/ acoustic panel ❸/ plasterboard ❹.

1. Position the panels before applying the glue on them. Apply glue on one side of the acoustic panel ❶.
Do not apply glue on the edges of the Instasoft® panels (during installation, make sure that they are butted together).
2. Allow the glue to dry out for 30-40 minutes. During the time that the glue is setting on the acoustic panel, put glue on the supporting wall ❷.
CAUTION: allow enough time for the glue to dry out to achieve the required adhesion: the Recticel glue for acoustic panels is a water-based adhesive. **You must wait at least 30 minutes**, so the glue can change from a whitish to translucent colour. Other indication that the panel is ready to be applied on the wall is that you will feel a slightly sticky effect while touching the panel surface. Time for the glue to dry out also depends on the temperature and humidity of the room.
3. Once the glue has dried out sufficiently, you can position the acoustic panel on the wall and apply consistent and sufficient pressure over the entire panel for approximately 30 seconds ❸. You can use a pressure roller to help you with this process. For the optimum acoustic performance, Instasoft® panels must cover the entire wall and join with the ceiling, floors and adjoining walls.
4. To install the required plasterboard finish, apply the glue to the side of the Instasoft® that is still visible ❹,
5. Glue the plasterboard ❹ (allowing enough time for the glue to pre-dry as indicated in point ❷). Place the packing strips on the ground in front of the acoustic panels approximately every 30 cm.
6. Then you can cover the acoustic panel with the plasterboard, preferably with an offset joint. In other words, the joints of the plasterboard should not be superimposed on the joints of Instasoft®. The plasterboard must be mounted at a distance of 2-3 mm from the floor, the adjoining walls and ceiling. Apply a consistent pressure to the entire panel for approximately 30 seconds ❺.

The gaps between the plasterboard and the floor must be filled in with an acrylic filler (cartridge gun type). When the glue is dry (this time depends on the temperature and humidity of the room), finish the joints. Apply the joint tape and filler with a spatula.

Plasterboards are required in order to meet fire safety requirements; they are part of the Instasoft® system, the performance and technical characteristics are described on the Instasoft® product technical datasheet.



Guarantees

- Until delivery, Recticel Insulation guarantees that Recticel Insulation products comply with the material standards and manufacturing quality, and that they overall meet specifications provided by Recticel Insulation. The technical characteristics are detailed in the Instasoft® product datasheet.
- Product made from recycled materials. The composition and visual aspect may differ, this has no impact on the products performance.
- Recticel guarantee applies only to the installation when used with Recticel glue for Instasoft® panels and plasterboard (sold separately). Recticel provides no guarantee to the performance of the product and its compatibility in final application, for installation where other glue was used as opposed to the one provided by Recticel specifically for installation of these panels. In that case, Recticel Insulation cannot be held responsible for the risks associated with this application.
- The guarantee applies only in the event of application being made accordingly to the installation instructions provided and complying with the specifications of the technical datasheet. In case of incorrect use (e.g. unfinished plasterboard, panels applied as floor insulation, etc.) Recticel Insulation provides no guarantee to the performance of the product and its compatibility in final application. In this case, Recticel Insulation cannot be held responsible for risks associated with this application (e.g. without the finishing plasterboard etc.)



- In the event of non-conformity of Instasoft® acoustic panels supplied by Recticel Insulation, Recticel Insulation may be called upon to replace only the Instasoft® products with identical products, unless the law in force requires otherwise.
- This guarantee does not cover any faults or damage of the goods or any other direct, indirect or consequential bodily injuries resulting from incorrect installation or maintenance, incorrect installation, accident, no adapted use or application 'not compliant', repair or improper modification, or even negligence.

Important

- It is the customer's responsibility to ensure the safety of the final product in its application and its compliance with all current national and international laws, regulations, directives and requirements in force.